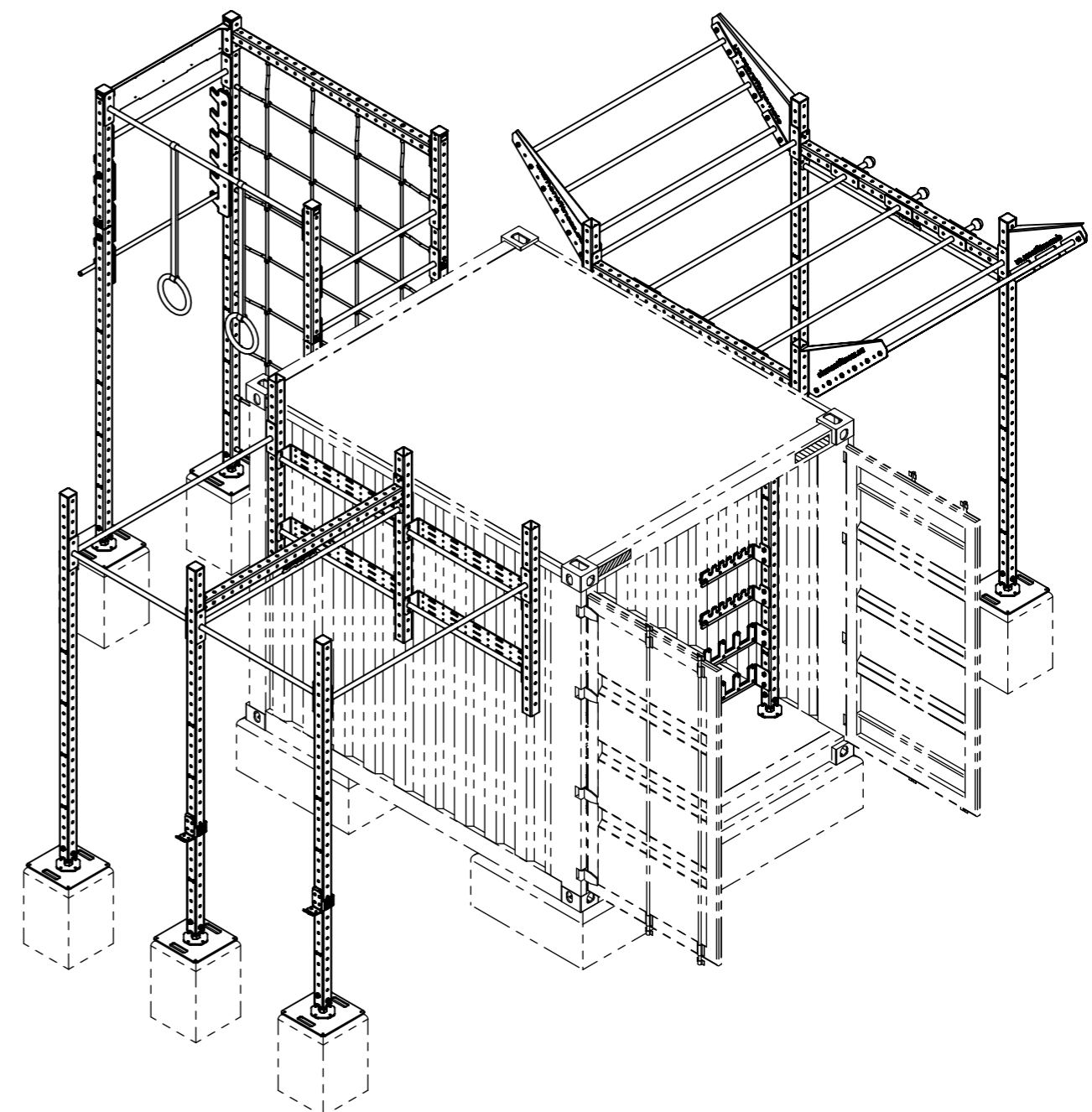
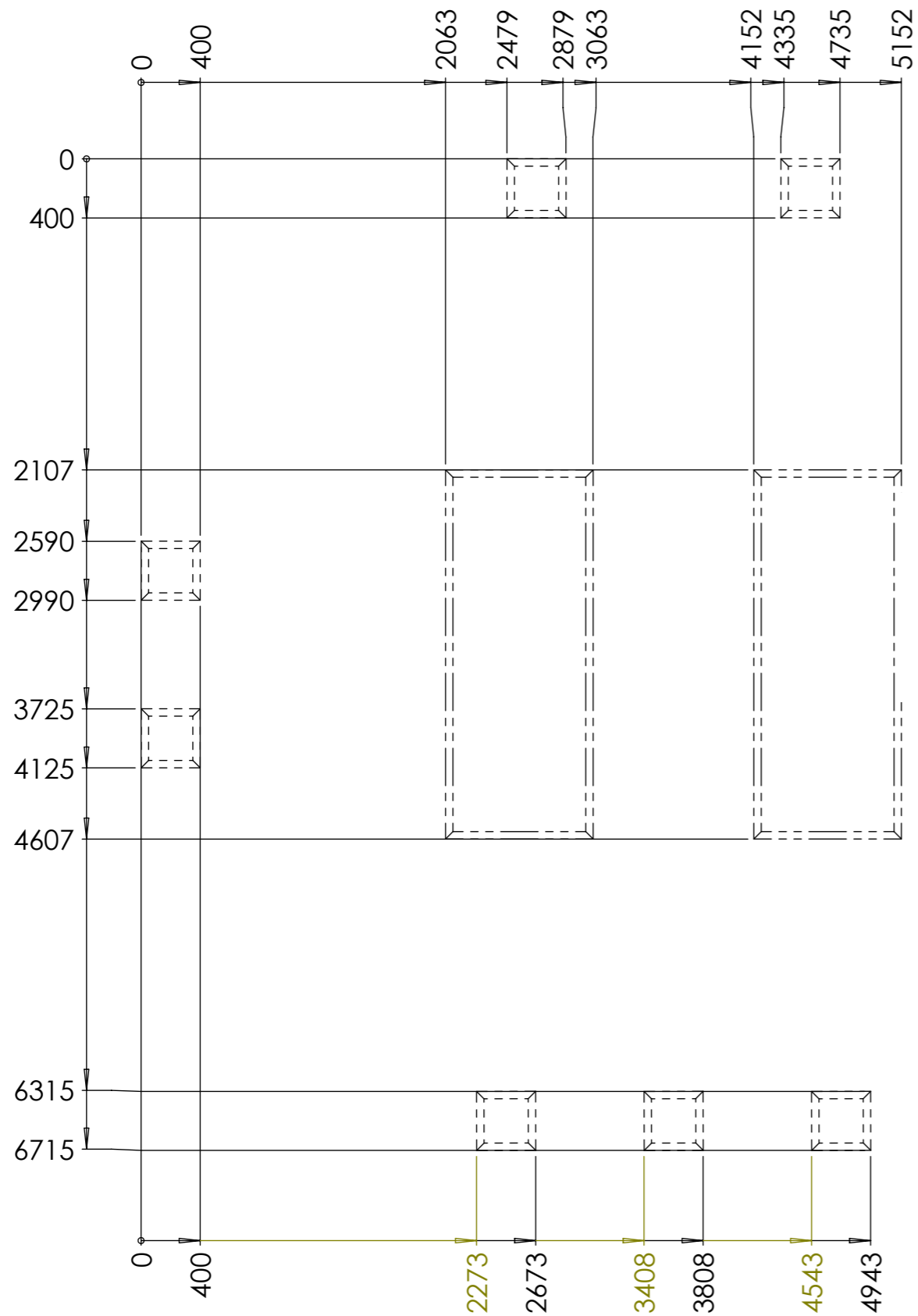


POS.	NUMBER	PCS	NAME
1	20-13428	5	Pillar convertible 2.8 Kompl
2	10-01917	5	Tube 80x80x3.2 L1440
3	20-00510	8	Basic Pull-Up Bar L=1776
4	20-00129	9	Single Pull-Up Bar L=1056 D=33,7
5	20-04078	6	Support1056
6	10-00503	7	Support plate 380x380x8
7	20-08241	2	Horizontal Beam L=1776 Kit EL
8	20-00508	2	Horizontal Beam L=1776
9	20-05621	4	Pillar extension 1056 Kompl
10	20-13676	2	Pillar convertible 2.4 Kompl
11	20-05531	1	Rings + Belts (SET)
12	20-05151	1	Salmon Ladder Set
13	10-00280	2	Tube 80x80x3 L=2400
14	20-01524	2	Wide flying pull-up bar 1,76m
15	20-02494	3	SPHERES
16	20-04650	2	Support 1776
17	20-14108	1	Set of Shelves (container 10")
18	20-08231	1	Plate NN
19	10-08314	1	Logo EL
20	20-11065	1	NET 3,1x1,7
21	20-12222	1	J-cup SET

	Cubic Capacity	Tare Weight (kgs)	Max Gross (kgs)	Max Payload (kgs)
10ft Standard Dry Container	15.857 m3	1.200	10,160	8,960

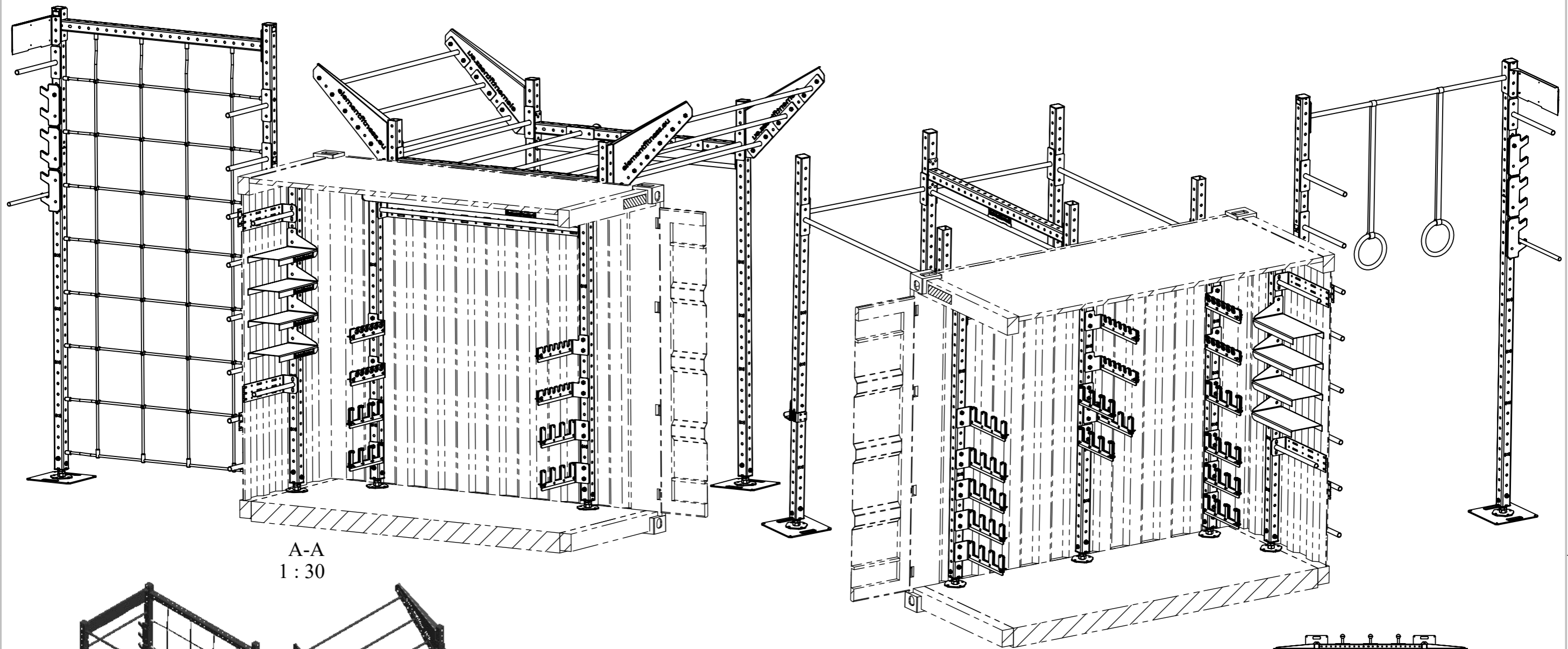
Rig Mass excluding container

<h1>30-16010</h1>	Mass
	1068.69

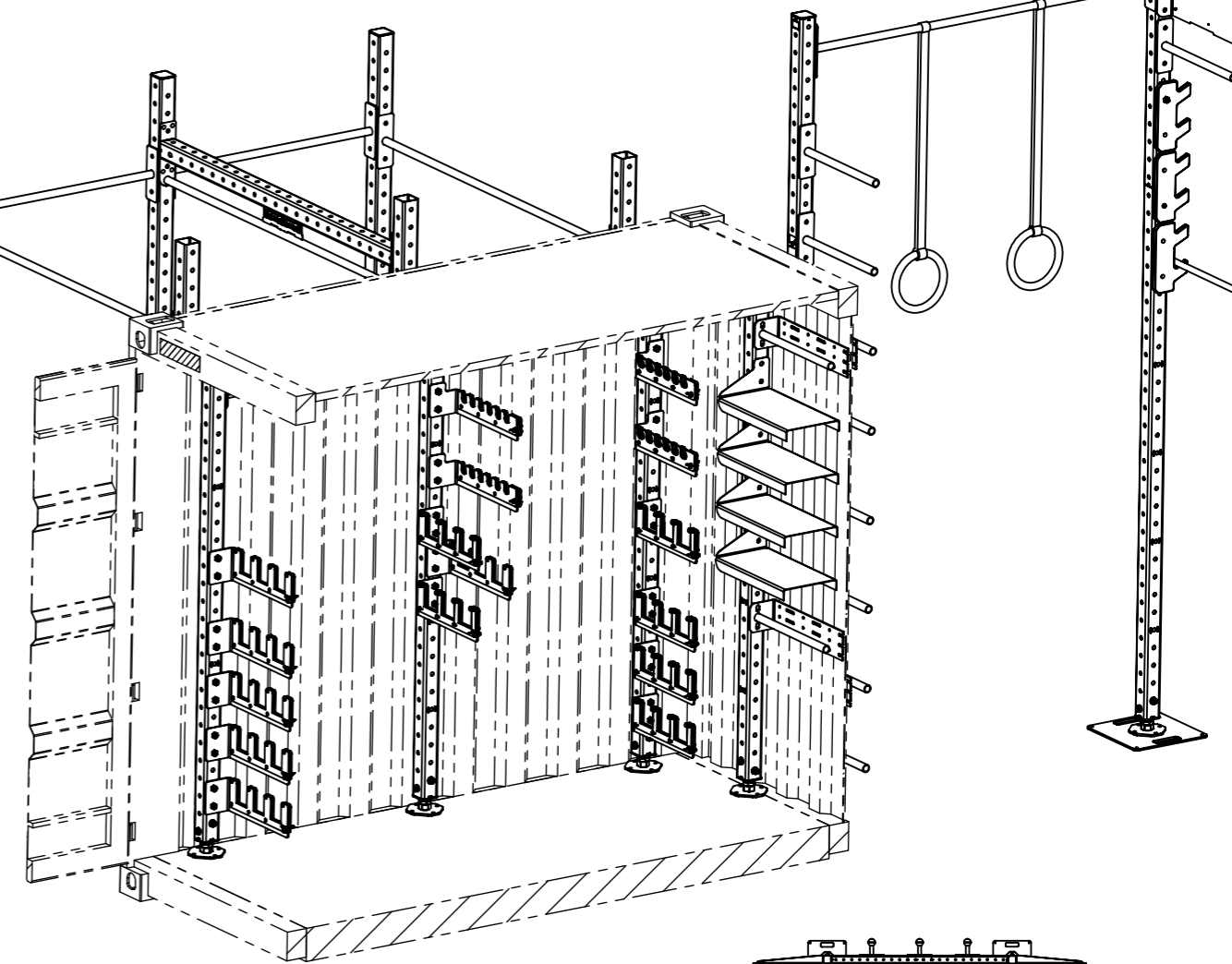


Optional Concrete Foundation.

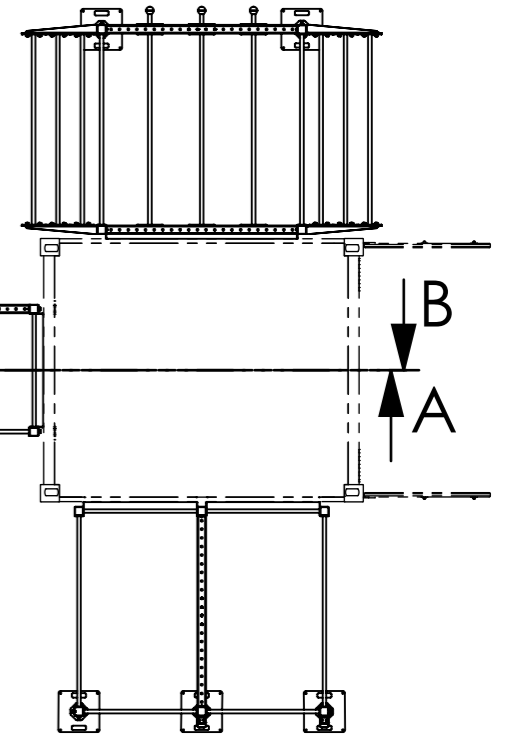
30-16010		Mass
SCALE:1:40		1068.69
A3		Sheet 2 of 5



A-A
1:30



B-B
1:30



A
B



30-16010

Mass

1068.69

SCALE:1:70

A3 Sheet 3 И3 5

